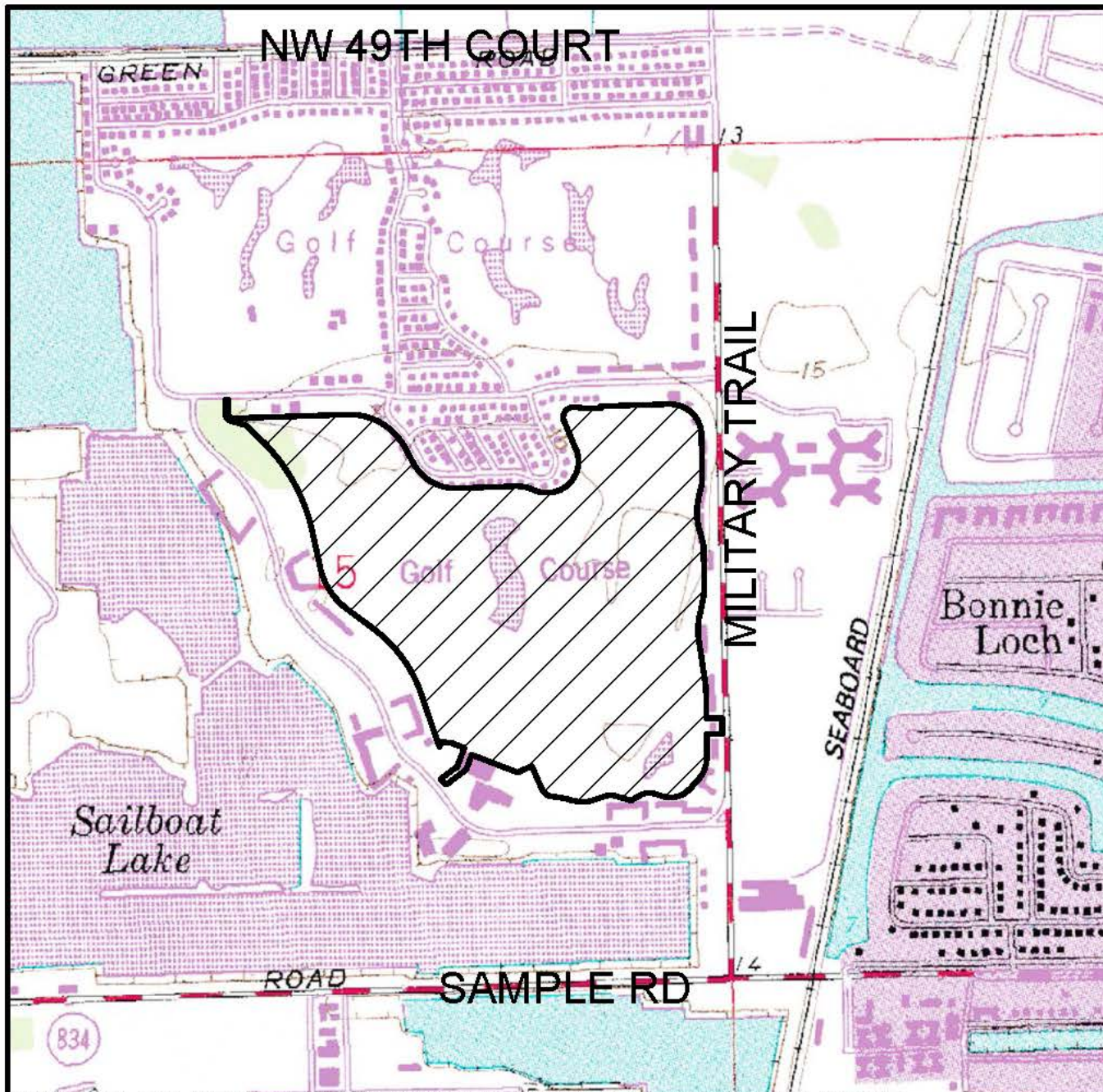


CRYSTAL LAKE COUNTRY CLUB LOCATION MAP



EW CONSULTANTS, INC.
 601 HERITAGE DRIVE, SUITE 124
 JUPITER, FLORIDA 33458
 561-623-5475 FAX 561-623-5481
 WWW.EWCONSULTANTS.COM

DATE: JUNE 2016
 FIGURE
1



USGS QUAD MAP "WEST DIXIE BEND", SECTION 15, TOWNSHIP 48 SOUTH, RANGE 42 EAST, CITY OF DEERFIELD BEACH, BROWARD COUNTY, FLORIDA, LATITUDE 26°16'53" LONGITUDE -80°08'23"

LEGEND

 - SITE (109± AC)



CRYSTAL LAKE COUNTRY CLUB

QUAD MAP

Crystal lake country club.dwg QUAD



EW CONSULTANTS, INC.

601 HERITAGE DRIVE, SUITE 124
JUPITER, FLORIDA 33458
561-623-5475 FAX 561-623-5481
WWW.EWCONSULTANTS.COM

JUNE 2016

FIGURE

2



FDOT AERIALS DATED 2015



CRYSTAL LAKE COUNTRY CLUB

AERIAL

Crystal lake country club.dwg AERIAL



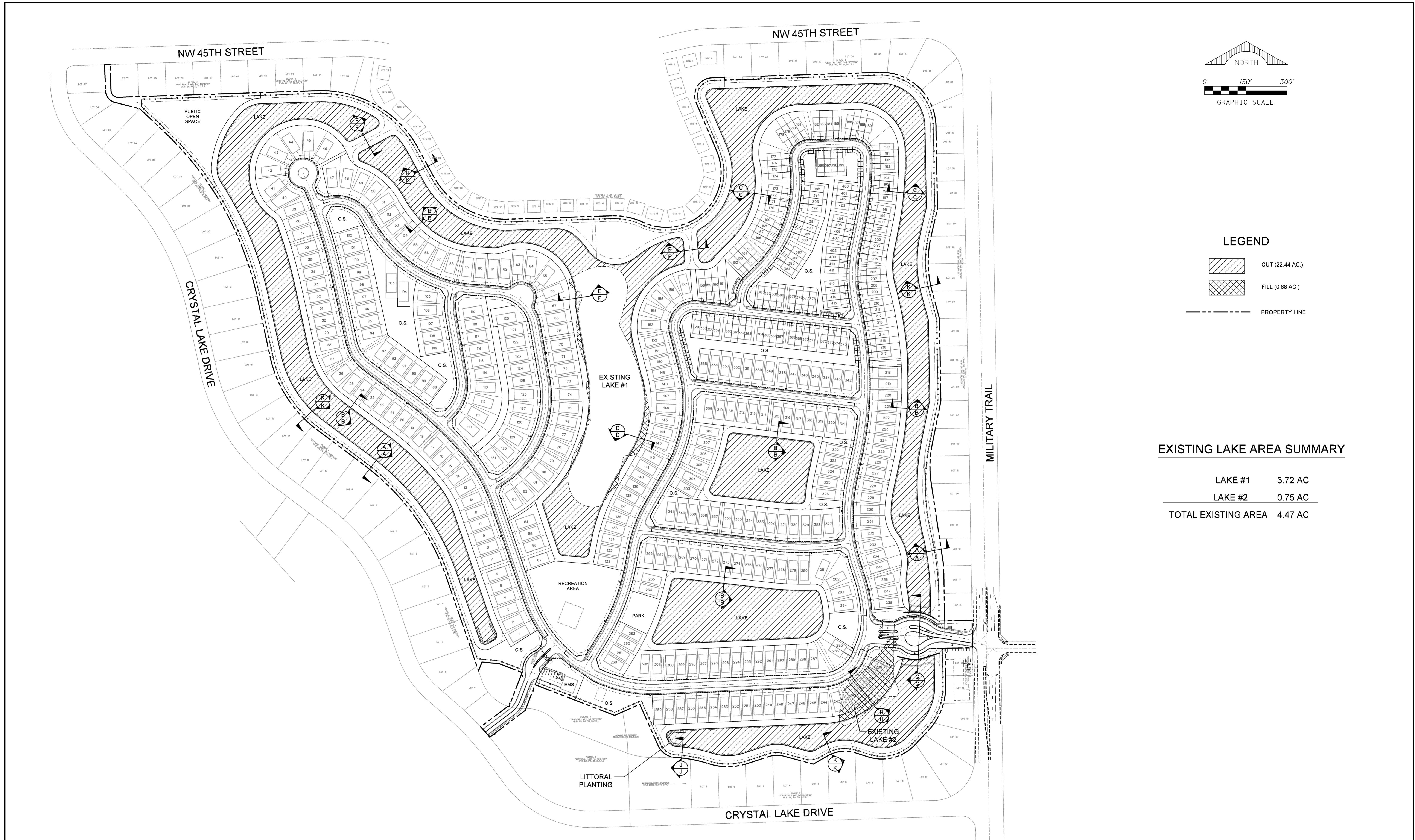
EW CONSULTANTS, INC.

601 HERITAGE DRIVE, SUITE 124
JUPITER, FLORIDA 33458
561-623-5475 FAX 561-623-5481
WWW.EWCONSULTANTS.COM

JUNE 2016

FIGURE

3



LEGEND

CUT (22.44 AC.)

FILL (0.88 AC.)

PROPERTY LINE

EXISTING LAKE AREA SUMMARY

LAKE #1	3.72 AC
LAKE #2	0.75 AC
TOTAL EXISTING AREA	4.47 AC

SCHNARS
ENGINEERING CORPORATION

947 Clint Moore Road
Boca Raton, Florida 33487
Certificate of Authorization #6640

Tel: (561) 241-6455
Fax: (561) 241-5182

OWNER: **Standard Pacific of Florida / CalAtlantic Homes**
825 Coral Ridge Drive
Coral Springs, Florida 33071

PROJECT: **CRYSTAL LAKE P.U.D.**
DEERFIELD BEACH FLORIDA

TASK: **LAKE CUT & FILL PLAN**

ORIGINAL: FEBRUARY 2017
REVISIONS:

6	_____
7	_____
8	_____
9	_____
10	_____
11	_____
12	_____

SEAL

Jeffrey T. Schnars, P.E.
Civil Engineer
Florida Registration No. 46697
(F.S. 481.09)

JOB NO. 15160
DRAWN RAD
DESIGNED JTS
CHECKED JWM
Q.C. JTS
SHEET 3 of 13

©Project: 03/20/2016 09:00 AM SCHNARS\JTS